



2025-2026 Audition Excerpts - Bass

Excerpt requirements by school grade level and ensemble.

4th – 5th Grade Students: Level A required

6th – 9th Grade Students: Level A required for **ALL** students **AND** Level B required for students auditioning for Concert Orchestra and Symphony Orchestra.

PVYO North Orchestra: Level A required, Level B optional

10th – 12th Grade Students: Level B and C

Bass Level A – Please Note – 3 excerpts in this category

Swan Lake Act II, No. 10 [♩ = 92]

P. Tchaikovsky/arr. Michael Hopkins

BASS EXCERPT 1 (LEVEL A)

Moderato *pizz.*

1 2 3-4 5 6 7

8 9 10 11 12 *p*

13 14 15 16 *p cresc.* 17 18

BASS EXCERPT 2 (LEVEL A)

19 arco *f* 20 21 22 23 24 25 26 *mf*

27 28 29 30 31 32 33 34 -1 *mf ff mf mf ff*

35 36 37 38 -2 39 40 41 3 *f ff f ff*

Detailed description: This musical excerpt is written for bass in G major (one sharp). It consists of three staves. The first staff (measures 19-26) begins with a square bowing mark and the word 'arco'. Measures 19-25 contain whole notes, with measure 19 marked with a forte (*f*) dynamic. Measure 26 contains a half note G2, marked with a mezzo-forte (*mf*) dynamic and a breath mark (V). The second staff (measures 27-34) contains eighth notes. Measures 28-34 are marked with dynamics: *mf*, *ff*, *mf*, *mf*, and *ff*. There are crescendo and decrescendo hairpins between measures 28-29, 30-31, 32-33, and 33-34. Measures 33 and 34 have breath marks (V). Measure 34 also has a fingering '-1' and a square bowing mark. The third staff (measures 35-41) contains eighth notes. Measure 35 has a fingering '2'. Measures 38-39 have a fingering '-2'. Measures 39-40 and 40-41 have a fingering '3'. Measures 39 and 40 are marked with *f* and *ff* dynamics, with a crescendo hairpin between them. Measures 40 and 41 are marked with *f* and *ff* dynamics, with a decrescendo hairpin between them. Measures 39, 40, and 41 have triplet markings.

BASS EXCERPT 3 (LEVEL A)

55 56-57 58 *mf* 59 60 *rit.* 61 *p*

Detailed description: This musical excerpt is written for bass in G major (one sharp). It consists of a single staff. Measures 55-57 contain eighth notes. Measure 58 contains a half note G2, marked with a mezzo-forte (*mf*) dynamic and a square bowing mark. Measures 58-61 contain eighth notes. Measure 59 has a fingering '2'. Measure 60 is marked with a *rit.* (ritardando) marking. Measure 61 contains a half note G2, marked with a piano (*p*) dynamic and a square bowing mark. The excerpt ends with a double bar line.



2025-2026 Audition Excerpts - Bass

Excerpt requirements by school grade level and ensemble.

4th – 5th Grade Students: Level A required

6th – 9th Grade Students: Level A required for **ALL** students **AND** Level B required for students auditioning for Concert Orchestra and Symphony Orchestra.

PVYO North Orchestra: Level A required, Level B optional

10th – 12th Grade Students: Level B and C

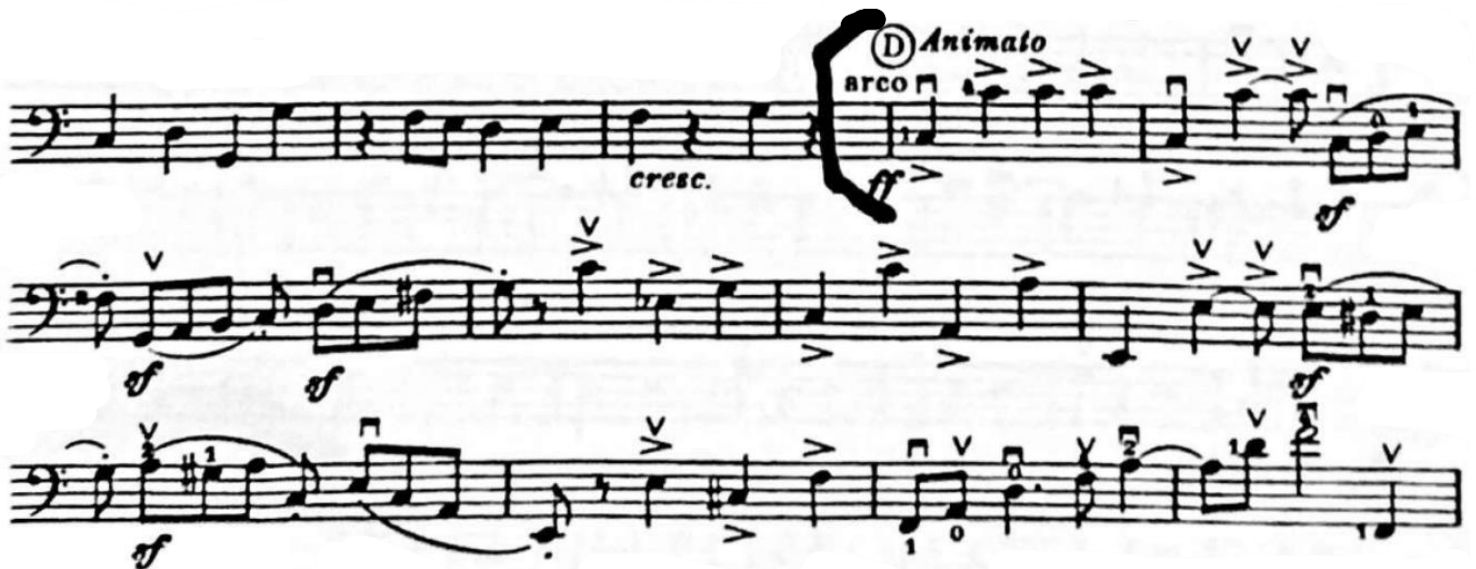
Bass Level B – Please Note – 2 excerpts in this category

BASS EXCERPT 1 (LEVEL B)

Brahms First Symphony (Fourth Movement)

J. Brahms/arr. Vernon F. Leidig

Allegro non troppo [$\text{♩} = 116$]



Excerpt continues on the next page.

2nd time to Coda

Animato

p

arco

pizz.

arco

pizz.

arco

pizz.

p

cresc.

f

mf

mp

BASS EXCERPT 2 (LEVEL B)

Symphony in D minor (1st Movement) [Half Note = 60]

Cesar Frank /arr. Vernon F. Leidig

(D) *V a tempo (cantabile)*

p

(E)

cresc.

p

(F)

cresc.

mf

cresc.

marc.

f



2025-2026 Audition Excerpts - Bass

Excerpt requirements by school grade level and ensemble.

4th – 5th Grade Students: Level A required

6th – 9th Grade Students: Level A required for **ALL** students **AND** Level B required for students auditioning for Concert Orchestra and Symphony Orchestra.

PVYO North Orchestra: Level A required, Level B optional

10th – 12th Grade Students: Level B and C

Bass Level C – Please Note – 4 excerpts in this category

BASS EXCERPT 1 (LEVEL C)

Franz Schubert, Symphony No.8 in B minor [♩ = 105]

The image shows a musical score for the Bass part of Franz Schubert's Symphony No. 8 in B minor. The score is written on three staves in bass clef with a key signature of two sharps (F# and C#). The first staff starts at measure 63 with a section marked 'B' and includes dynamics like *ffz* and *fz*, and a *cresc.* marking. The second staff starts at measure 79 with a *ff* dynamic. The third staff starts at measure 86 and includes a section marked 'C'. Large black brackets on the right side of the staves group measures 63-78, 79-85, and 86-92. The tempo is indicated as [♩ = 105].

BASS EXCERPT 2 (LEVEL C)

Franz Schubert, Symphony No.8 in B minor [♩ = 115]

168 *ff* *fz* *fz* *ff*

184 *fz* *fz* *fz* *fz* *fz* *ffz* *fz* *pp*

200 *cresc.* *ff* *fz* *p* *ff* *fz*

208 *p* *decresc.* *pizz.* *P. pp*

BASS EXCERPT 3 (LEVEL C)

Jean Sibelius, Finlandia, Op. 26, Allegro Moderato [♩ = 120]

BASS EXCERPT 4 (LEVEL C)

Jean Sibelius, Finlandia, Op. 26, Allegro Moderato [♩ = 120]

156 **L**
mf

164

172

179 **M**
f *più f* *ff* *ff f cresc.* *cresc.*