

MARYLAND REQUIRED SCALES

MBDA

Flute

Key of C

Musical notation for the Key of C scale, starting on middle C (C4) and ascending to C5. The scale is written in treble clef with a common time signature. The notes are: C4, D4, E4, F4, G4, A4, B4, C5, B4, A4, G4, F4, E4, D4, C4. The piece concludes with a double bar line and a final C4 note.

Key of F

Musical notation for the Key of F scale, starting on F3 and ascending to F4. The scale is written in treble clef with a common time signature. The notes are: F3, G3, A3, Bb3, C4, D4, E4, F4, E4, D4, C4, Bb3, A3, G3, F3. The piece concludes with a double bar line and a final F3 note.

Key of Bb

Musical notation for the Key of Bb scale, starting on Bb3 and ascending to Bb4. The scale is written in treble clef with a common time signature. The notes are: Bb3, C4, D4, Eb4, F4, G4, Ab4, Bb4, Ab4, G4, F4, Eb4, D4, C4, Bb3. The piece concludes with a double bar line and a final Bb3 note.

Key of Eb

Musical notation for the Key of Eb scale, starting on Eb3 and ascending to Eb4. The scale is written in treble clef with a common time signature. The notes are: Eb3, F3, G3, Ab3, Bb3, C4, D4, Eb4, D4, C4, Bb3, Ab3, G3, F3, Eb3. The piece concludes with a double bar line and a final Eb3 note.

Key of Ab

Musical notation for the Key of Ab scale, starting on Ab3 and ascending to Ab4. The scale is written in treble clef with a common time signature. The notes are: Ab3, Bb3, C4, D4, Eb4, F4, G4, Ab4, G4, F4, Eb4, D4, C4, Bb3, Ab3. The piece concludes with a double bar line and a final Ab3 note.

Key of G

Musical notation for the Key of G scale, starting on G3 and ascending to G4. The scale is written in treble clef with a common time signature. The notes are: G3, A3, B3, C4, D4, E4, F#4, G4, F#4, E4, D4, C4, B3, A3, G3. The piece concludes with a double bar line and a final G3 note.

Key of D

Musical notation for the Key of D scale, starting on D3 and ascending to D4. The scale is written in treble clef with a common time signature. The notes are: D3, E3, F#3, G3, A3, B3, C#4, D4, C#4, B3, A3, G3, F#3, E3, D3. The piece concludes with a double bar line and a final D3 note.

Key of A

Musical notation for the Key of A scale, starting on A2 and ascending to A3. The scale is written in treble clef with a common time signature. The notes are: A2, B2, C#3, D3, E3, F#3, G#3, A3, G#3, F#3, E3, D3, C#3, B2, A2. The piece concludes with a double bar line and a final A2 note.

MARYLAND REQUIRED SCALES

MBDA

Oboe

Key of C



Key of F



Key of Bb



Key of Eb



Key of Ab



Key of G



Key of D



Key of A





Plus 1 octave chromatic scale, slurred in triplets or quartuplets.

MARYLAND REQUIRED SCALES

MBDA

Clarinet: NOT Transposed

Tempo: Quarter = 144 bpm

Key of C



Key of F



Key of Bb



Key of Eb



Key of Ab



Key of G



Key of D



Key of A





Plus 3 octave (fluid) chromatic scale. Pattern at discretion of performer. Usually 16ths or triplet eighths.

Clarinet: E-E

MARYLAND REQUIRED SCALES

MBDA

Saxes

Key of C



Key of F



Key of Bb



Key of Eb



Key of Ab



Key of G



Key of D



Key of A





Plus 1 octave chromatic scale, slurred in triplets or quartuplets.

MARYLAND REQUIRED SCALES

MBDA

TRUMPET and HORN
NOT Transposed

Key of C



Key of F



Key of Bb



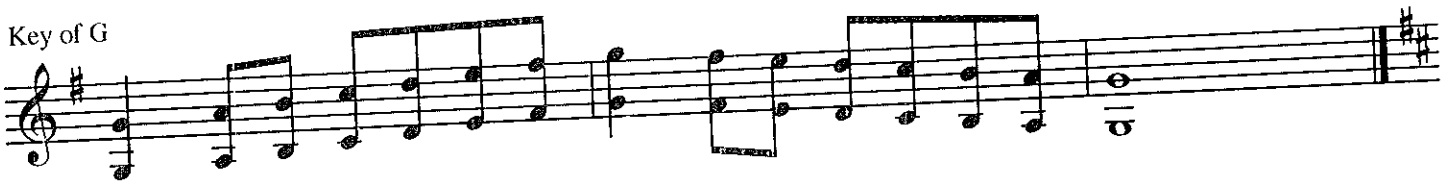
Key of Eb



Key of Ab



Key of G



Key of D



Key of A



MBDA SCALES

Key of E



CHROMATIC



MARYLAND REQUIRED SCALES

MBDA

EUPHONIUM,
TROMBONE

↳ BASSOON

Key of C



Musical notation for the scale of C major in bass clef. The scale consists of the notes C, D, E, F, G, A, B, and C, ascending and then descending. The key signature has no sharps or flats.

Key of F



Musical notation for the scale of F major in bass clef. The scale consists of the notes F, G, A, Bb, C, D, E, and F, ascending and then descending. The key signature has one flat (Bb).

Key of Bb



Musical notation for the scale of Bb major in bass clef. The scale consists of the notes Bb, C, D, Eb, F, G, A, and Bb, ascending and then descending. The key signature has two flats (Bb, Eb).

Key of Eb



Musical notation for the scale of Eb major in bass clef. The scale consists of the notes Eb, F, G, Ab, Bb, C, D, and Eb, ascending and then descending. The key signature has three flats (Eb, Ab, Bb).

Key of Ab



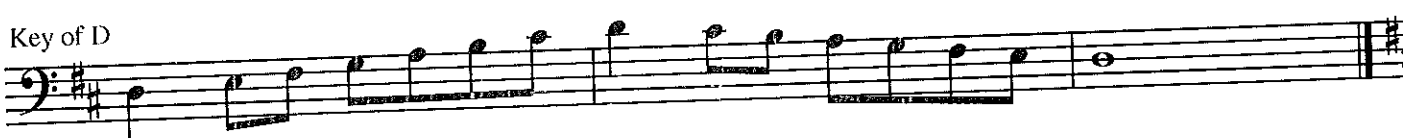
Musical notation for the scale of Ab major in bass clef. The scale consists of the notes Ab, Bb, C, Db, Eb, F, G, and Ab, ascending and then descending. The key signature has four flats (Ab, Bb, Eb, Fb).

Key of G



Musical notation for the scale of G major in bass clef. The scale consists of the notes G, A, B, C, D, E, F#, and G, ascending and then descending. The key signature has one sharp (F#).

Key of D



Musical notation for the scale of D major in bass clef. The scale consists of the notes D, E, F#, G, A, B, C#, and D, ascending and then descending. The key signature has two sharps (F#, C#).

Key of A



Musical notation for the scale of A major in bass clef. The scale consists of the notes A, B, C#, D, E, F#, G#, and A, ascending and then descending. The key signature has three sharps (F#, C#, G#).

MBDA SCALES

Key of E

A single musical staff in bass clef with a key signature of two sharps (F# and C#). The scale consists of the following notes: E2, F#2, G2, A2, B2, C#3, D3, E3, F#3, G3, A3, B3, C#4, D4, E4. The scale concludes with a double bar line and a repeat sign.

CHROMATIC

A single musical staff in bass clef with a key signature of one flat (Bb). The scale consists of the following notes: Bb1, B1, C1, C#1, D1, D#1, E1, E#1, F1, F#1, G1, G#1, A1, Ab1, A#1, Bb1. The scale concludes with a double bar line and a repeat sign. Triplet markings (the number '3') are placed above the first three notes of each of the six ascending phrases and below the first three notes of each of the six descending phrases.

MARYLAND REQUIRED SCALES

TUBA

MBDA

Key of C



Key of F



Key of Bb



Key of Eb



Key of Ab



Key of G



Key of D



Key of A



Key of E



CHROMATIC

